

**1840's-** First settlers arrived in the Sublimity area, which was first named **Hobson's Corner** in 1848 for Hadley Hobson of South Carolina who arrived via a detour to the California gold fields.

**1850- James M. Denny** received a Donation Land Claim grant of one quarter section.

**1851** Denny operated a store out of his home just south of west Denny Street, **25**.

**1852** Denny named **Sublimity** and opened its (US Territorial) **Post Office**, one of the first six in Oregon, six years before it became a state, at his home/store, **13**.

**1853-** A group of 98 members of the **United Brethren** church made up a colony that came by ox train from Indiana to Albany, Oregon, soon to found **Sublimity College**, **3**.

**1853-** The hilltop **Hobson-Whitney Cemetery** was established east of Sublimity, **8**.

**1854-** The **Sublimity School District** was formed. The first log school house built just west of Sublimity south of Main Street. Samuel Denny was the teacher.

**1857- Sublimity College** was founded. Bishop **Milton Wright, father of Orville and Wilbur**, was headmaster, located just northeast of the present St. Boniface Church, **3**.

**1860-63** On the location of **Ditter's Square** on Center street was the Hobson general merchandise store later owned by a Mr. Glass, **11**.

**1870-** The college closed, most of the Brethren having left during the Civil War.

**1870s- German Catholic farmers moved in from Minnesota, etc.**

**1878-The Parker House Hotel, 20**, was just south of the Fast Stop service station on Center St., **20** To the south was the **Nicholas LaCroix general merchandise store**, later Riesters', now the **Veterinary Clinic, 13**. Across Center street was one of the saloons preceding the Wooden Nickel, **14**. Just east was Paul Frank's **blacksmith** shop.

**1878-District 7 grade school** was built approximately where the present **City Hall** is, **18**.

**1879-The First Catholic Church** in honor of St. Boniface, was a small vacant building on the east corner of Center and Maple streets, **19**.

**1879-Father Peter Juvenal Stampfl** arrived, a German via Minnesota. He wrote the first entry in the parish record December 3, 1879, the **official beginning** of St. Boniface Church.

**1880-The Second Catholic Church, 3**, was the vacated **Sublimity College** just northeast of the present church, **2**, including 20 acres, purchased by Rev. Peter J Stampfl. One acre was designated the **Cemetery of the Angels, 1**.

**1881-1884** German priests from Mt Angel Abbey served until the first permanent pastor arrived. The first rectory, a small two room house used by the **Swiss Rev. Wernher Ruettimann OSB, first Pastor of St. Boniface**, was located east of second church, **3**.

**1885-Sisters** arrived from Jordan and later became the Sisters of St. Mary of Oregon.

**1885- Ditters' Store** was founded by John A. Ditter from Wisconsin on the same location as the Hobson general merchandise store, **11**.

**1887-**An addition to the old college building, then the second church, was used as the **first Convent** for the newly arrived **Sisters** of the Most Precious Blood from Jordan, Oregon. In 1889 this addition was moved to where the **present Convent** sits, **5**.

**1888-The first parish school** was built by Joseph Spenner west of the second church, **3**.

**1888 Second Rectory** was built just south of **present Rectory, 6**.

**1888-** The renamed **Sisters of St. Mary** opened the **first parish school in Marion County**. There were two school systems, public and Catholic, working together. For many years following, **Catholic nuns also taught in the public schools**.

**1889-** Father Joseph Fessler arrived from Milwaukee and built the **third (present) St. Boniface church, 2**.

**1895- Pastor Anthony Lainck** of noble German parentage arrived via Gervais, Oregon.

**1898-** The **second parish grade school** was built by Father Lainck on Main Street north of the cemetery, first school was added as an annex.

**1904- Hermens Creamery** was about a block and a half west of Center St. on Main St..

**1902- Sublimity was incorporated** and granted its own charter through the efforts of Senator William M. Hobson.

**1903-**Father Lainck began driving his horse and buggy to Stayton to say mass there on alternate Sundays in the new but unstaffed Stayton church.

**1907** The Catholic Order of **Foresters Hall, 27**, was built on Main and Broadway streets, demolished in 1980.

**1908** St. Boniface' separate **bell tower** built with three bells.

**Present church remodeled.**

**1913-1914** The **third parish school** was built by Bernard Prange on Main St. where the Grotto of the Blessed Virgin now is..

**1926-** Philip Steffes found a native thornless blackberry, predecessor of the Marionberry.

**1927-** Father Lainck died after a visit to his German birthplace, **having served for 32 years**.

**1940-1941** A gymnasium was built on Main and Pine St. by Rev. Joseph Scherbring

**1945-The St. Boniface High School** was built on south Main St. west of the gym under direction of Rev. Joseph Scherbring, now used as **Middle School, 4**.

**1948-A new Convent** for the teaching Sisters of Saint Mary of Oregon was built under direction of Rev. Joseph Scherbring on present location, **5**. The old convent (college building) was moved and used as a home for the elderly and infirm, **7**.

**1949-A District 7C school** was built on the corner of north Main and east Pine on William and Mary Bell property.

**1957-The present Rectory, 6**, was built under the direction of Rev. Robert Neugebauer

**1949-** The Rural Fire District was formed.

**1954-** Father Scherbring realized a long cherished dream - a home for the sick and aged in Sublimity. It had its roots in Minnie Hassler, a kindly single lady who had been looking after elderly folks in the old convent building that had been moved onto her acreage, which she later donated for the **Marian Home**, named for the Marian Year, run by six nuns from Austria. From the beginning it was non-sectarian. Marian Auxiliary, Inc. was incorporated in 1957 as a non-profit and dissolved in 1975. It is privately operated now as **Marian Estates, 7**.

**1962- Regis High School in Stayton** opened, St. Boniface High became vacant, the grade school moved into it.

**1972-** The **Sublimity Harvest Festival** began, the largest such west of the Mississippi.

**1979-** St. Boniface Church celebrated its **centennial**.

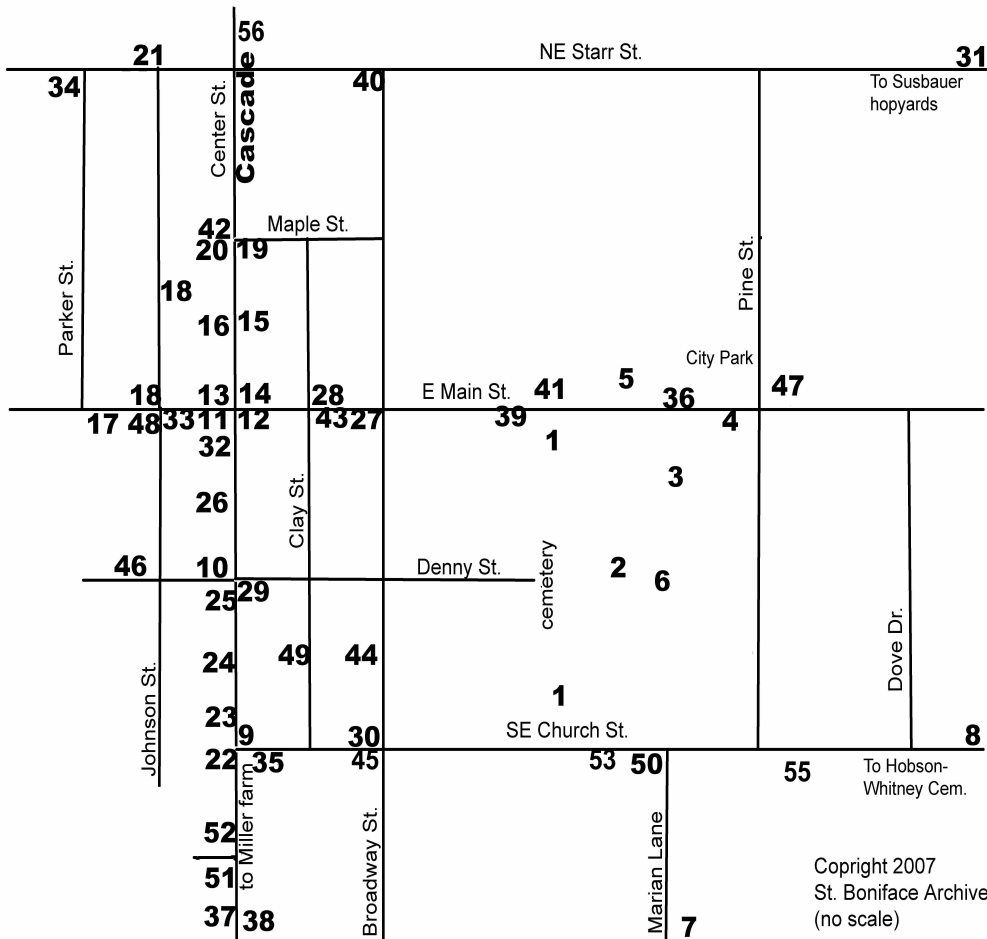
**1997-** The **Santiam Canyon Stampede** (annual rodeo) began at the Festival grounds.

**2002-** Sublimity got a large **new post office, 21**.

**2003-** [www.saintboniface.net](http://www.saintboniface.net) went online with a *History of Sublimity* by Henry Strobel.

**2004-** June 5 was the **125th anniversary of the parish and the 1250th anniversary of the martyrdom of Bishop Boniface, its patron saint in Germany**. It was marked by a Mass, a German sausage picnic, music in a huge tent, a welcome to the whole community, and a display of historical artifacts that preceded the St. Boniface Archives.

**2006-** The **St. Boniface Parish Archives** group officially began in February, 2006. **5**

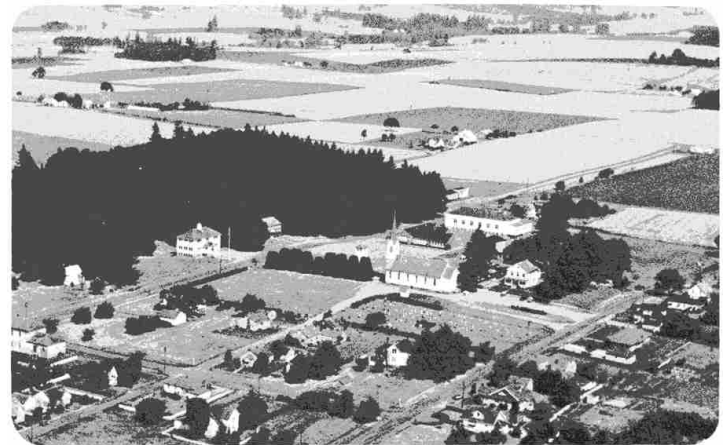


- 26-Halfman house
- 27-Foresters Hall \*
- 28-Breitenstein-Benedict house
- 29-Ginter house
- 30-John A. Ditter house
- 31-To Susbauer hop field.
- 32-1st Firehouse, Center St.
- 33-2nd Firehouse, Main St.
- 34-3rd (present) Firehouse, Parker St.
- 35-Kintz house, to be a medical clinic.\*
- 36- War Memorial, canon, bronze lists
- 37- Adam Susbauer house
- 38-Schultebein "haunted" house
- 39-Paul Zuber house
- 40-John Zuber-Heuberger house
- 41-George Glover house
- 42-Anthony VanHandel house
- 43-Arnold VanHandel house
- 44-Becker-Riesterer house
- 45-George Bell house
- 46-Spenner-Toepfer house
- 47-District 7C School, 1949
- 48-Hermens house
- 49-Giebler house
- 50-Joseph Zimmerman house
- 51-Joseph Etzel house 1910
- 52- Wenzel Doerfler house
- 53-Jacob Frank house
- 54-Philip Glover house, moved here from north of town
- 55-William Lulay house
- 56-Englebert Schott house

## Walker's Guide to Historic Sublimity

(Buildings followed by an \* no longer exist.)

- 1-St. Boniface Cemetery
- 2-St Boniface (third and present) Church
- 3-Sublimity College (1st convent, 2nd church) \*
- 4-St. Boniface H. S., now Sublimity Middle S.
- 5-Convent building, now classrooms, Archives.
- 6-St. Boniface Rectory
- 7-Marian Home, now Marian Estates.
- 8-To Hobson-Whitney Cemetery. Left on Boedigheimer Rd, right up past the water tower.
- 9-3rd Post Office, built 1960-61
- 10-2nd Post Office in Clara Neal's house
- 11-Ditters' store, became Ditters Square
- 12-Service Station
- 13-1st Post Office, LaCroix, later, Riesterer store\*
- 14-Saloons, Confectionary, now Wooden Nickel
- 15-Blacksmith
- 16-VanHandel harness shop
- 17-Hermens Creamery \*
- 18-Former Public School, Settlers' Park \*
- 19-Former small building, first church
- 20-Parker House Hotel, VanHandel
- 21-4th and present Post Office,
- 22-Joe Susbauer house
- 23-Gene Ditter house
- 24-Ditter Girls' house
- 25-Ed Ditter house



1955 St. Boniface buildings, grounds, grove comprising 22 acres, showing the church with cemetery, bell tower, old grade school, convent, St. Boniface high school, gym, grandstand, and rectory. City water tower on extreme right, Foresters hall on extreme left.

### St. Boniface Archives Office and Museum

In the Convent Building across Main St. from the Church.

Open 10 AM Tuesdays.

503 749-2858 or 503 769-5381 for information.

Website: [www.saintboniface.net](http://www.saintboniface.net)

Click on [Archives Record](#) , or "What's in the Archives?"

or read the fascinating

Illustrated History of Sublimity, Oregon, 1840-2007



1853 Probably the first burial in Hobson-Whitney Cemetery. "by accidental shooting"



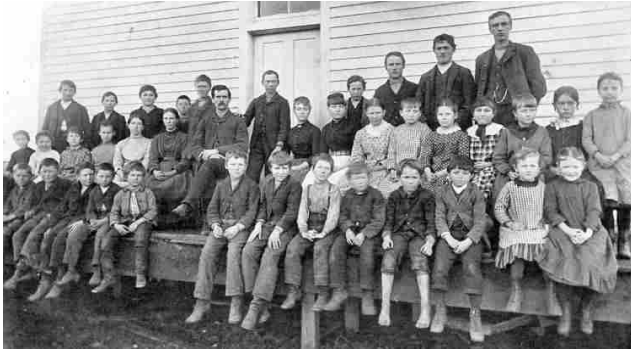
Milton Wright, headmaster of Sublimity College, later Bishop, United Brethren. Sons invented the airplane.



Fr. Werner Ruettiman, Swiss Benedictine, first resident pastor of St. Boniface Church.



Ditters' store about 1890, Hobson's had preceded it here. Across the street was the LaCroix store, which became the Sublimity PO in 1876, and later became Riesterers' store.



1887 Sublimity Public School District No. 7, located in what is now Settlers' Park, across from the new fire station.



Right, first parish school in Marion County. Left the rectory, middle the college, its addition at right.



Joseph Ripp. Read his diary on our web page.



Classes were half in German. Few attended beyond the fifth grade. Public and Catholic schools worked together. Nuns passed the state certification exams and taught in the public schools.



Present church, dedicated in 1889. The old college building, is *just* visible behind the trees at the left.



Fr. Ruettiman's addition to the college was used as a convent on the present site.



1890 Looking south on Center St. The hotel is on the right. The stores are farther along. A Sunday afternoon race?



Hobson house, east side of the Stayton Sublimity Rd. (The Miller century farm)



1898 Left, 2nd St. Boniface school to supplement the 1st, at right, 1888.



1903-1904 The Hottinger and Ditter families.



Pastor Anthony Lainck, of German nobility, served 32 years (1885-1927). He was productive and popular, a friend of all in the area.

*These scenes from Sublimity History were compiled by members of the St. Boniface Archives and Museum. There are more on the next page, and many more at our web site:*

**[www.saintboniface.net](http://www.saintboniface.net)**

This "Place Map" is a production of St. Boniface Archives, Sublimity, Oregon © 2007.



Swiss Abbot Odermatt founded Mt. Angel. He served Sublimity by horseback 1881-1882



John Zuber house, number 40 on the map.



1960 The old St. Boniface school is on the left, the bell tower is in the middle behind the sculptured trees, and the church on the left.



1937 Sublimity Fire Dept. got an International pumper, still on display.



Frank Spenner on 3 horsepower binder. Poetry in harvesting.



Kitchen of the Marian Home, originally run by six Servite sisters from Austria.



Old St. Boniface School, 1913, near convent site, no. 5 on map.



The only Post Office in the world named Sublimity, In Clara Neal's home until 1960. Map no. 10.



1907-1980 Hall, National Catholic Order of Foresters, Men and Women



4<sup>th</sup> of July parade about 1910 going east on Main St., Baribeau house in center. Goddess of Liberty atop the horse drawn float.



1935 Pastor Francis Scherbring's well attended funeral, no. 1 on the map. Looking west from the steeple of the present church.

Center Street, looking south, around 1900.



Center Street, looking north. Ditter Bell & Co. store at left front

